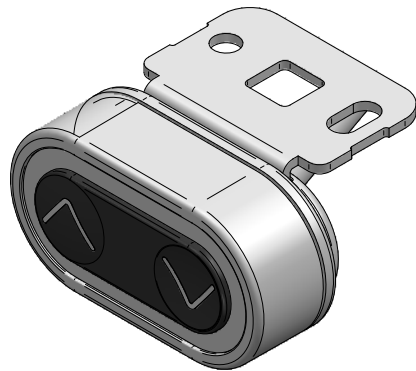
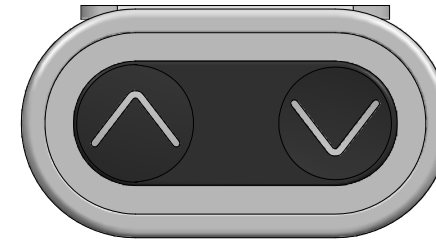


Procedure for setting height on motiontv

**NOTE ONLY EXTENDED HEIGHT CAN BE PROGRAMMED.
RETRACTED HEIGHT IS ALWAYS BACK TO ZERO.**

The following procedure can only be done with the panel shown in this diagram-Code:DPF1K01-000006 (**not with the remote control**).

Make sure the TV is at it's lowest position.
Press & hold the "up" button and let the TV move up.
When the TV reaches the desired height let the "up" button go.
The TV will stop and the maximum height will now be set.
The system has now been programmed to rise to this height.
Use the remote control from now on to operate the system.
To re-set the maximum height again go through the above procedure.



Initialization of the system (only necessary if legs lose their positions-this is recognized by the TV being able to lower but not raise again)

The system is initialized by pressing the "down" key once or twice and holding it down until the TV run into end stop. Once it reaches this position keep the "down" button pressed and the TV will then automatically run approx. 5 mm out again hereafter slowly running in again. Only release the "down" key when the movement has completely stopped.

If the key is released before the sequence is complete then the initialization is interrupted and must be started again from the beginning.

It is sometimes necessary to press the "down" key twice to start the initialization this is because the system can be in different modes when the initialization starts.

If an error situation occurs at the end stop positions or the posts are changed, then the controller has to be reset by pressing the "up" and "down" keys simultaneously for a min. of 5 seconds, after which a new initialization sequence can be run.

© Copyright all rights reserved.

This drawing is the property of Ergomotion Pty Ltd. It may not be copied in whole or part nor can it be used for the manufacture of any equipment described without written permission of Ergomotion. Ergomotion reserves the right to change, without notice, the specifications and materials contained in this drawing and shall not be responsible for any damages (including consequential) caused by reliance on the information presented.

Customer:

Date:

ergomotion

PO Box 234, East Bentleigh, VIC, 3165
+61 3 95791454

TITLE: DPF1K-Setting Height on TV lift (Bluetooth Control)

Designed by Guy Topolansky