

Procedure for setting memory positions on DPF1M

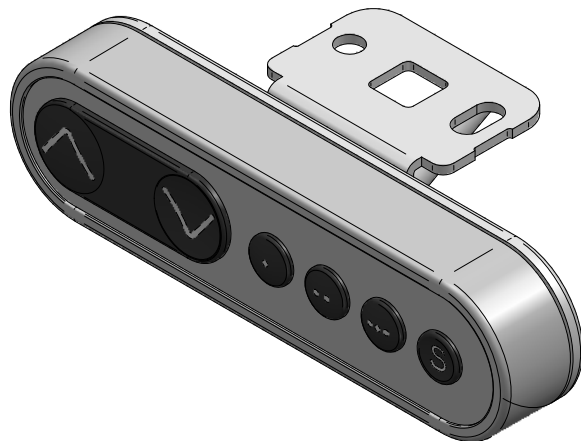
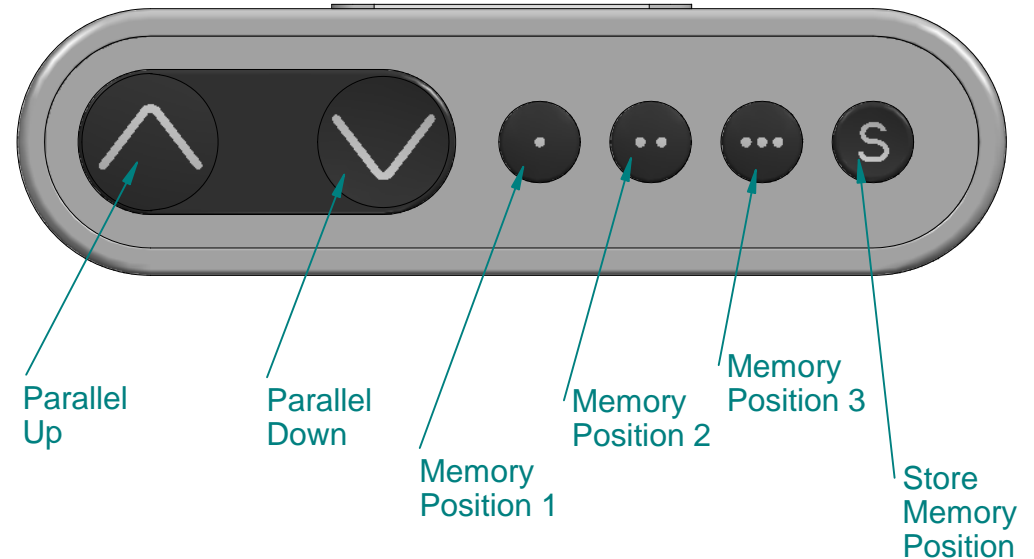
Setting memory positions:-

Lower desk to lowest position and initialize system if necessary
Drive the desk to the desired height using the "parallel up" or "parallel down" button
Press the store button and then the "Memory 1" button
Position 1 is now stored
Repeat above procedure for positions 2 and 3

Recalling memory positions:-

Press and hold the "memory 1" button until desk reaches stored position and stops
Repeat previous step for memory position 2 and 3

Memory positions can be bypassed by pressing the "parallel up" or "parallel down" buttons



Initialization of the parallel systems (only necessary if legs lose their positions-this is recognized by the desk being able to lower but not raise again)

The system is initialized by pressing the "parallel down" key once or twice and holding it down until legs run into end stop. Once it reaches this position keep the "parallel down" button pressed and the legs will then automatically run approx. 5 mm out again hereafter slowly running in again. Only release the "parallel down" key when the movement has completely stopped. If the key is released before the sequence is complete then the initialization is interrupted and must be started again from the beginning.

It is sometimes necessary to press the "parallel down" key twice to start the initialization this is because the system can be in different modes when the initialization starts.

If an error situation occurs at the end stop positions or the legs are changed, then the CBD4 has to be reset by pressing the "parallel up" and "parallel down" keys simultaneously for a min. of 5 seconds, after which a new initialization sequence can be run.

© Copyright all rights reserved.

This drawing is the property of Ergomotion Pty Ltd. It may not be copied in whole or part nor can it be used for the manufacture of any equipment described without written permission of Ergomotion. Ergomotion reserves the right to change, without notice, the specifications and materials contained in this drawing and shall not be responsible for any damages (including consequential) caused by reliance on the information presented.

Customer:

Date:

ergomotion

PO Box 234, East Bentleigh, VIC, 3165
+61 3 95791454

TITLE: DPF1M desk panel with memory

Designed by Guy Topolansky